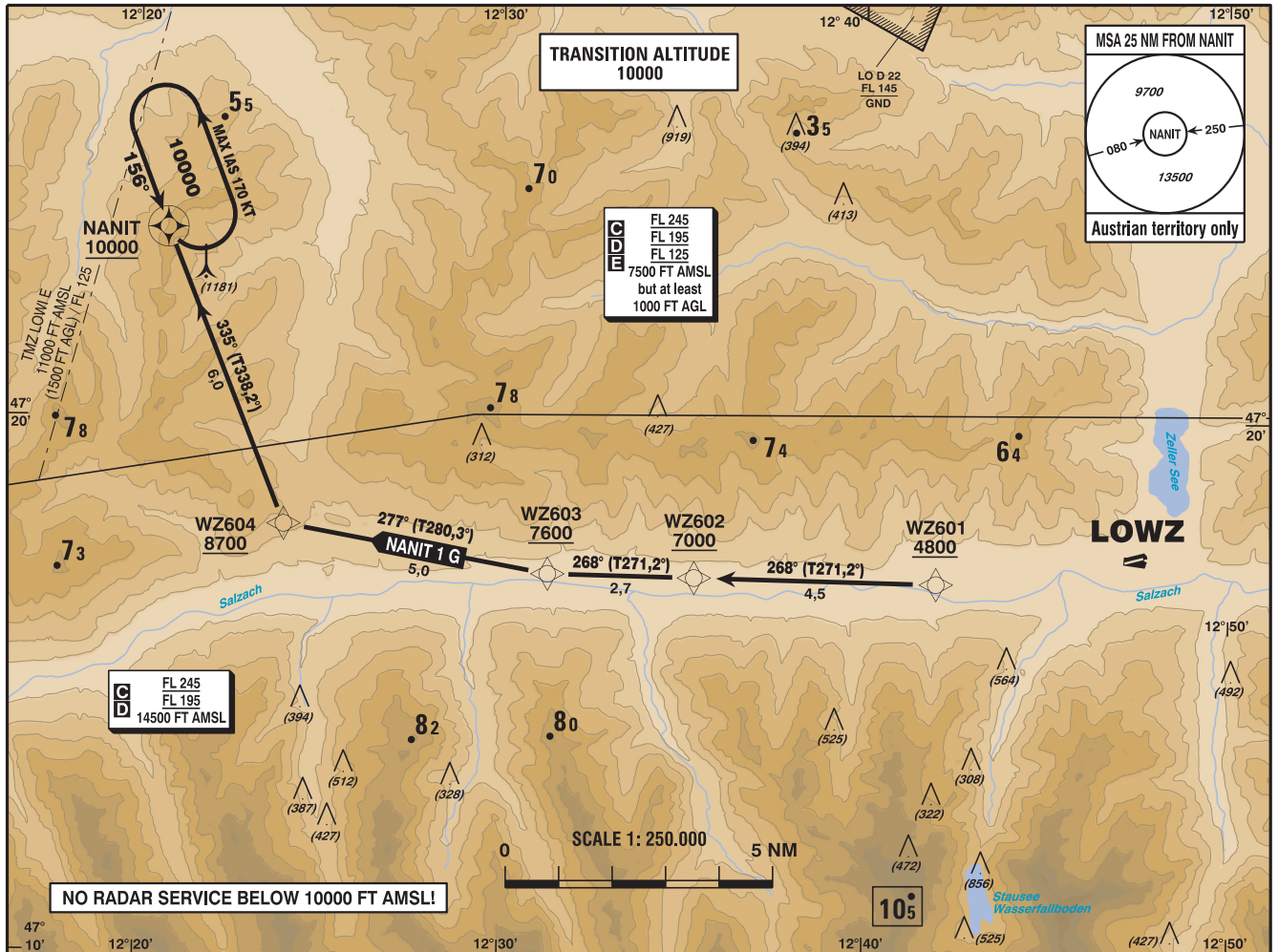


**STANDARD DEPARTURE
CHART - INSTRUMENT
(SID) - ICAO**

VAR 3° E

INNSBRUCK RADAR 128.975
ZELL AM SEE AD 119.705

ZELL AM SEE
ÖSTERREICH AUSTRIA



CHANGE: RADAR FREQ.; EDITORIAL

- GNSS required
- RNAV 1 or P-RNAV approval required

Departing from LOWZ only allowed as VFR flight, IFR starts, when passing WZ601, established on track to WZ602 and passing 4800 FT AMSL

IFR procedure is within airspace class G until 2 NM north of WZ604

Operating as IFR flight along SID subject to ATC clearance

Obtain further ATC-Route clearance on FREQ 128.975

Flights shall contact INNSBRUCK RADAR FREQ 128.975 when passing 7000 FT AMSL

Designator	Route	After Take-Off		Remarks
		Climb to ..initially	Expect FREQ	
NANIT 1 G Nanit one Golf departure	WZ601 - WZ602 - WZ603 - WZ604 - NANIT	By ATC	INNSBRUCK RADAR 128.975	Climb gradient at least 8.0% (490 FT/NM) until WZ602, thereafter 3.6% (220 FT/NM).
Contact INNSBRUCK RADAR when passing 7000 FT AMSL				

RNAV SID Coding Table of NANIT 1 G										
Path Terminator	Waypoint			Course/ Track ° MAG (° True)	DIST NM	Turn Direction	Constraints		Navigation Specification	Remarks
	Identifier	Flyover	Coordinates				Level	Speed		
IF	WZ601		N471700.56 E0124158.57				A4800+		RNAV 1	
TF	WZ602	no	N471706.12 E0123519.70	268° (271.2°)	4.5		A7000+		RNAV 1	
TF	WZ603	no	N471709.30 E0123118.09	268° (271.2°)	2.7		A7600+		RNAV 1	
TF	WZ604	no	N471803.14 E0122402.12	277° (280.3°)	5.0	right	A8700+	K165-	RNAV 1	
TF	NANIT	yes	N472334.87 E0122047.17	335° (338.2°)	6.0	right	A10000+	K165-	RNAV 1	

RNAV Holding								
Holding Point	Inbound Track ° True	Inbound Track ° MAG	Turn Direction	MAX IAS	Minimum Holding Altitude FT MSL / FL	Time	DIST NM	Remarks
NANIT	159.0°	156°	left	K170-	10000 FT MSL	1 MIN		